

PVM Chrome browser interface issues

Dev Web Login settings are:

General Settings

To insert username + password into the fields where your focus is, press Ctrl + Shift + U.
To insert only the password, press Ctrl + Shift + P.

Automatically fill-in credentials entry on load.

Automatically submit the form after fill-in

Icons in fields

Show save credentials bar

Enable link to Remote Desktop Manager app

Enable link to Password Vault Manager app

Enable link to Devolutions Server

Use Legacy API

Color the fields filled

Select your favorite color:

Destination group on save:

Link:

Remote Desktop Manager port: Use default port

Password Vault Manager port: Use default port

Remote Desktop Manager application code:

Password Vault Manager application:

Devolutions Server:

Server:

PVM settings are

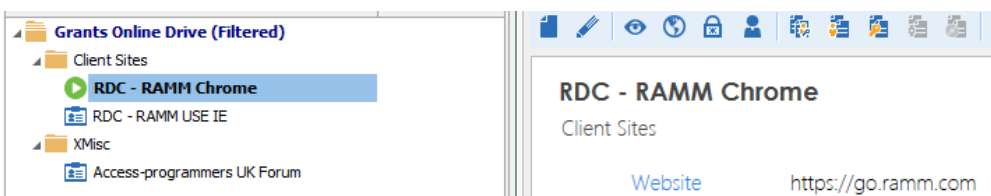
Browser Extensions

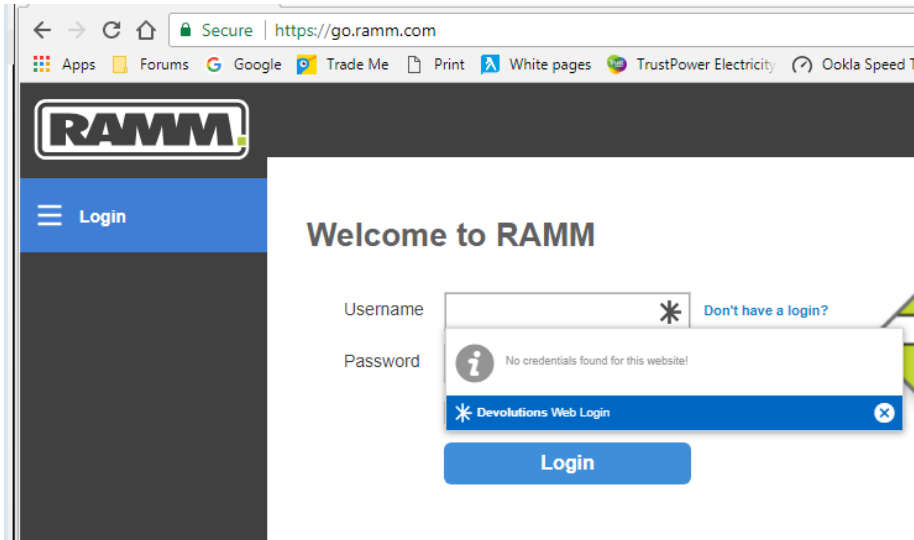
- Enable Http listener
- Use default port
 - Port:
 - Don't forget to change the port number in the browser extensions options
- Enable private vault
 - Application key:

if try to open and log into this website, using the PVM client the url is not recognised by the web login addin

<https://go.ramm.com>

This url is in PVM with login and password, yet when I click the "open url" button





Now if I go to another tab in the browser, then back to this one and click the * again it now shows two options for login so it has now matched the url, but has duplicated it as there is only one record in PVM. Though there are two records with this same URL, one from IE one for Chrome so I think the addin is pulling back both records but only the first name

Welcome to RAMM

