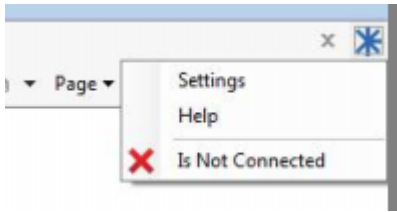
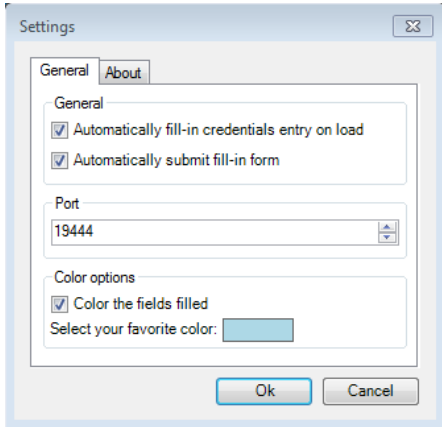


PVM IE browser interface issues

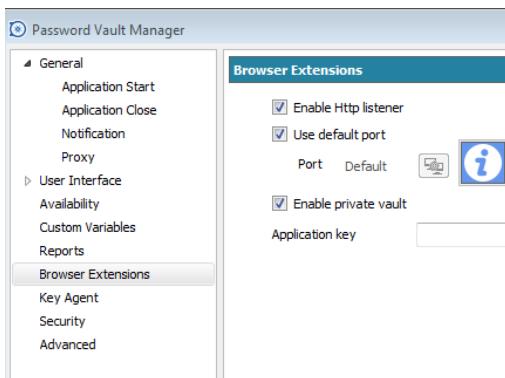
when first open IE Dev Web Login cog shows:



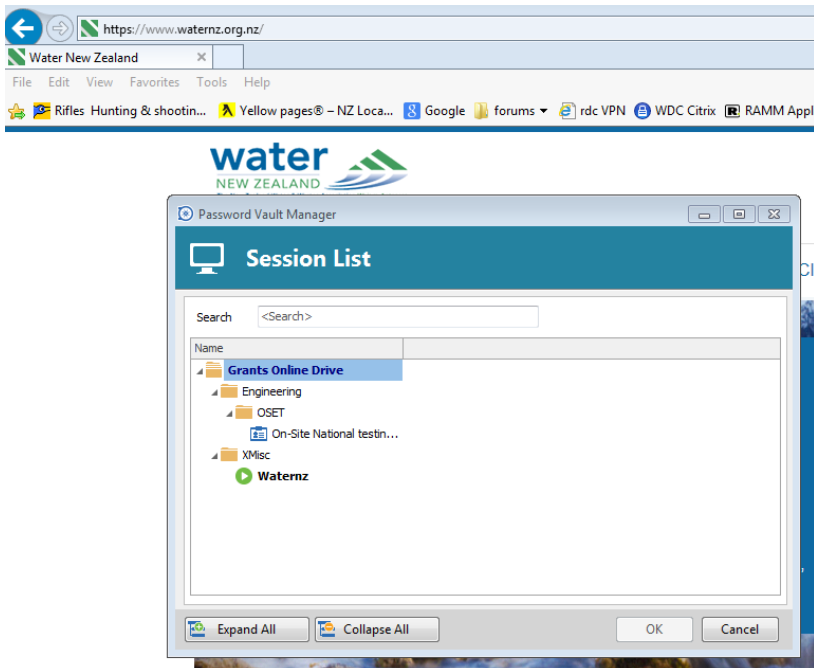
Dev Web Login settings are:



here are PVM settings



if I then log into page manually it sometimes pops up this dialog box...what am I supposed to do with this?????



sometimes after a minute or two if I check the Dev X icon it will display "is connected" so its as if its taking some time to validate the connection to the client app